

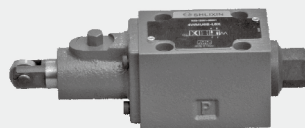


4/3, 4/2 and 3/2 directional valve with mechanical, manual operation

2.6

Type WMR(U)6...L6X

Size 6
Up to 315 bar
Up to 60L/min



Contents

Function and configuration	02
Ordering code	02
Symbols	03
Technical data	03
Operating limitation	04
Characteristic curves	04
Unit dimensions	05

Features

- Direct operated directional spool valves with mechanical, manual operation
- Roller plunger
- 19 versions of spools, optional

Function

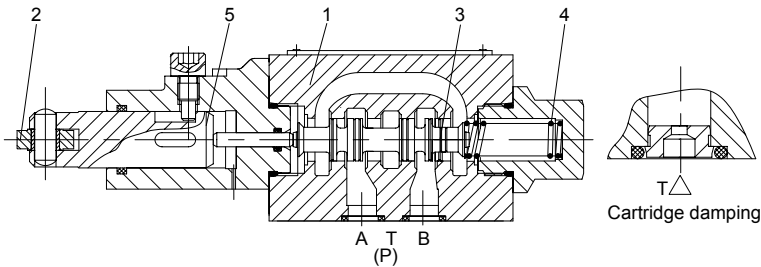
Directional valves, type WMR/U6.. are mechanical directional spool valves with roller plunger. There are 2 position 3way, 2 position 4 way and 3 position 4 way valves with many versions of spool symbols, the roller/plunger can be rotated by 90° .

The valves consist basically of the housing (1), roller/plunger (2), spool (3), return springs (4), and pushing rod (5). In the unoperated condition, the spool (3) is held in the initial position by the return spring, while in operated condition, the spool (3) is pushed to the expected position by roller/plunger (2) conquering the return springs (4).

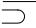
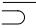
Cartridge throttle

The use of a throttle insert is required, when, due to given operating conditions, flows can occur during the switching processes that exceed the performance limit of the valve

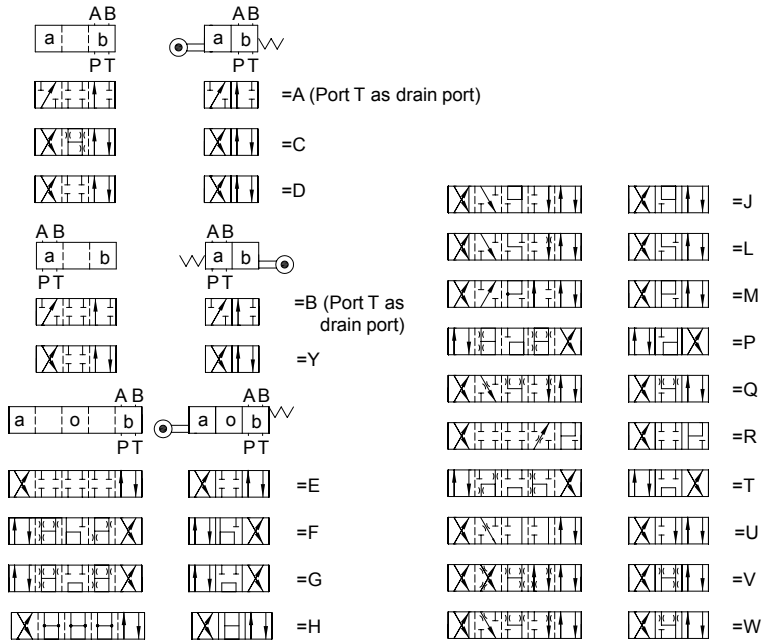
These throttles are to be inserted into the P-channel of the directional valve.



Ordering code

WM		6	-	L6X	/		*
3 ways (version A and B) =3 4 ways =4							Further details in clear text
 Roller fixed horizontally=R  Roller fixed vertically =U Roller and push rod see 'Unit dimensions'							No code = NBR seals V = FKM seals
Nominal size 6 =6							No code = Without cartridge throttle B08 = Throttle - Ø0.8 mm B10 = Throttle - Ø1.0 mm B12 = Throttle - Ø1.2 mm
Symbols e.g. C, E etc.see next page						L6X =	Series L60 to L69 (L60 to L69: unchanged installation and connection dimensions)

Symbols



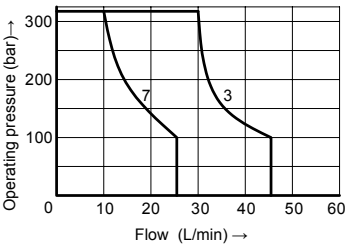
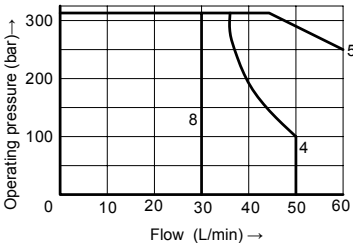
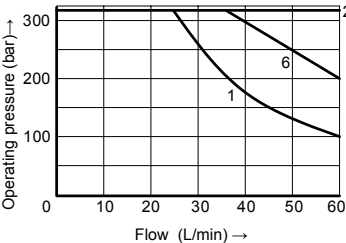
Technical data

Fluid temperature range		°C	-30 to +80 (NBR seal)
			-20 to +80 (FKM seal)
Max. operating pressure	Port A,B,P	bar	315
	Port T	bar	60
Max. flow-rate		L/min	60
Flow cross section (switching neutral position)	Type Q	mm ²	for symbol Q 6% of nominal cross section
	Type W	mm ²	for symbol W 3% of nominal cross section
Fluid			Mineral oil, Phosphate ester
Viscosity range		mm ² /s	2.8 to 500
Degree of contamination			Maximum permissible degree of fluid contamination: Class 9. NAS 1638 or 20/18/15, ISO4406
Weight		kg	1.4

Operating limitation

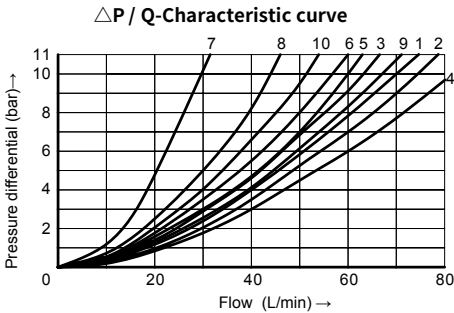
Because of the adhesive effect, the switching function of the valves depends on the filtration. In order to achieve the specified admissible flow values, we recommend full flow filtration with 25 µm. The flow forces acting within the valves also affect the flow performance. With 4 way valves the specified flow data thus apply to normal operation with 2 volume flow directions (e.g. from P to A and at the same time return flow from B to T) (see table).

If only one flow direction is available, in critical cases, the admissible flow can be significantly smaller (e.g. when using a 4 way valve as 3 way valve, due to blocked connection A or B).



Curve	Spool symbol
1	A,B
2	E,M,H,C,D,Y,Q,U,W
3	F,P
4	G
5	J,L
6	R
7	T
8	V

Characteristic curves (Measured at $\vartheta_{oil}=40^{\circ}\text{C} \pm 5^{\circ}\text{C}$, using HLP46)

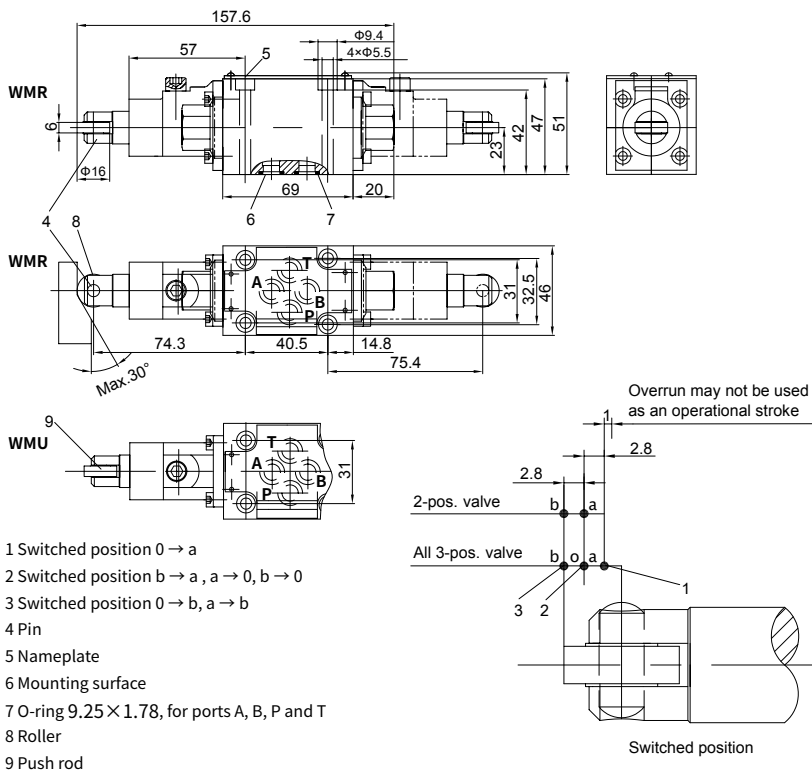


- 7 Symbol "R" in switched positions B → A
- 8 Symbol "G" and "T" in neutral position P → T
- 9 Symbol "H" in neutral position P → T

Spool symbol	Flow direction			
	P to A	P to B	A to T	B to T
AB	3	3	-	-
C	1	1	3	1
DY	5	5	3	3
E	3	3	1	1
F	1	3	1	1
T	10	10	9	9
H	2	4	2	2
J Q	1	1	2	1
L	3	3	4	9
M	2	4	3	3
P	3	1	1	1
R	5	5	4	-
V	1	2	1	1
W	1	1	2	2
U	3	3	9	4
G	6	6	9	9

Unit dimensions

(Dimensions in mm)



**It must be ordered separately,
if connection plate is needed.**

Type :

G341/01(G1/4),G341/02 (M14×1.5)

G342/01(G3/8), G342/02(M18×1.5)

G502/01(G1/2), G502/02(M22×1.5)

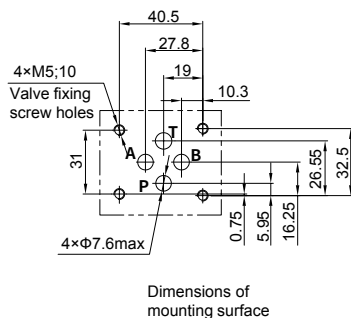
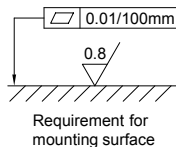
Valve mounting screws:

Internal hexagon screw

M5×50 GB/T 70.1-10.9,

Tightening torque, $M_A=9\text{Nm}$

must be ordered separately.



China +86 400 101 8889	America +01 630 995 3674
Germany +49 172 3683463	Japan +81 03 6809 1696



© This brochure can be reproduced, edited, reproduced or transmitted electronically without the authorization of Hengli Hydraulic Company. Due to the continuous development of the product, the information in this brochure is not specific to the specific conditions or applicability of the industry, thus, Hengli does not take any responsibility for any incomplete or inaccurate description.